

Remediation and Redevelopment

Former Beckjord Operating Station

Highlights

Site redevelopment of a former coal-fired electric power generating station



Developed ash consolidation plan to reduce capping costs



Identified alternate passive treatment approach for leachate



Successfully navigated heavy public/community scrutiny

Project History

Liability Transfer Company

New Richmond, Ohio



Beckjord Station

Project Description

This former coal-fired electric power generating station is located adjacent to the Ohio River and was acquired by the client for the purpose of remediation and redevelopment. The site is proposed for industrial and commercial redevelopment following closure of the coal ash reservoirs and demolition of the idle power plant. Major elements of the ongoing project include the closure of four coal ash reservoirs covering roughly 200 acres, closure of two inactive landfill cells, remediation of several marginally stable above-grade ash disposal areas, and performance of a groundwater monitoring program to demonstrate compliance with applicable groundwater standards.

Activities Performed

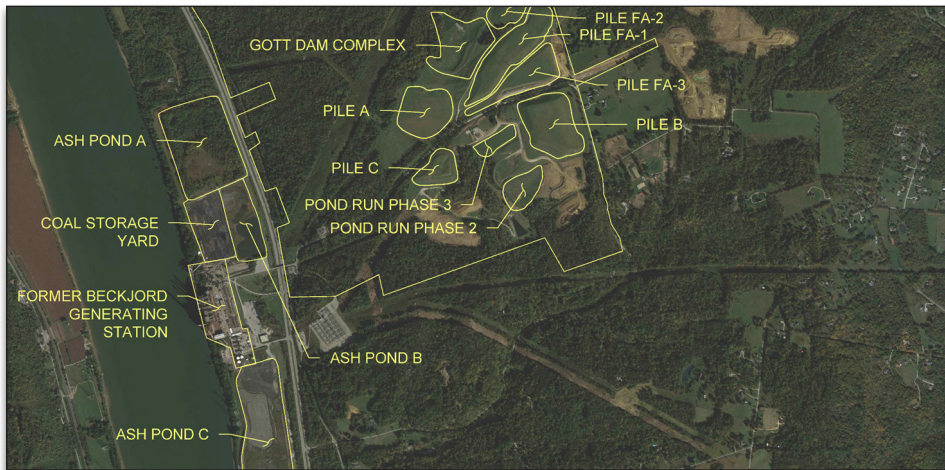
KEY initially developed a plan for comprehensive ash management, including clean closure of the reservoir located closest to the nearby public water supply. Ash removed from the clean-closed reservoir will be placed into the remaining three reservoirs or removed

from the site for beneficial reuse. The remaining reservoirs will be capped with low permeability clay to be obtained from upland portions of the site. The landfill cells will be capped in place, and the nearby above-grade ash disposal areas will be regraded as necessary and retrofitted with toe drains in excessively saturated areas. This overall approach has been conceptually approved by Ohio EPA. KEY's activities include:

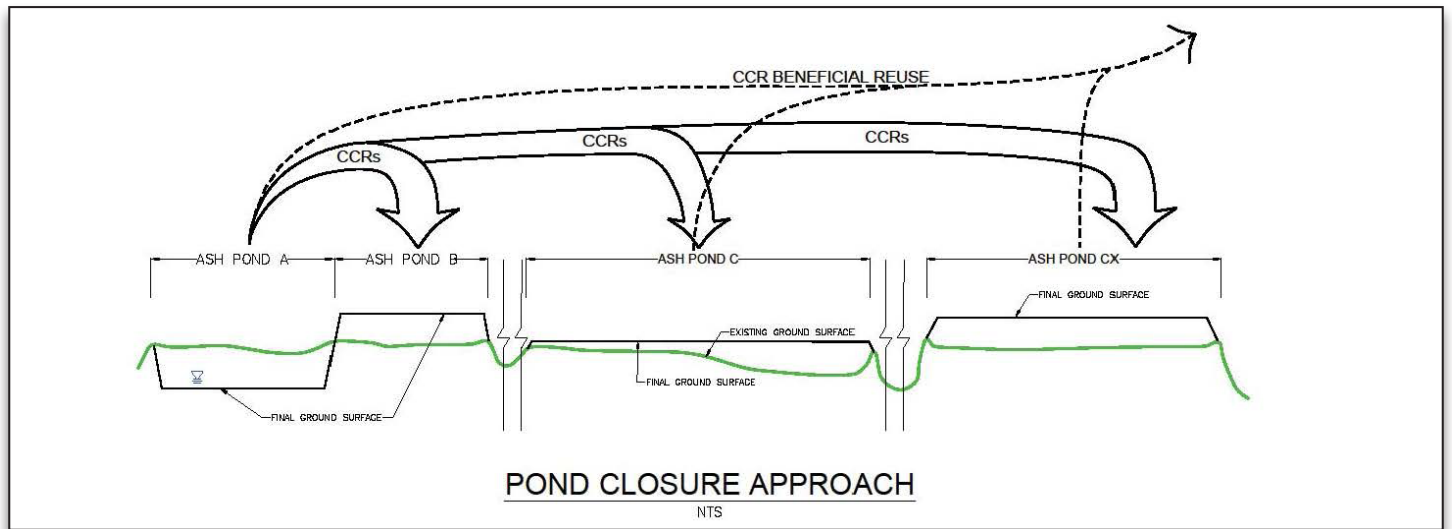
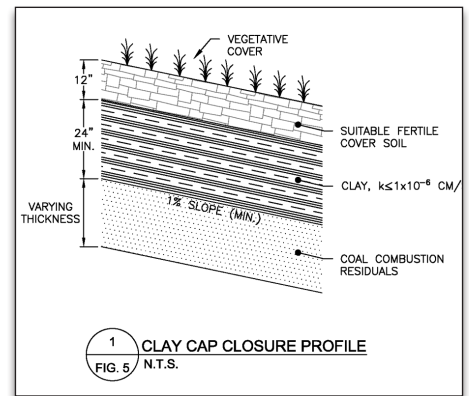
- Reservoir Closure Design and Permitting
- Dam Permit Compliance
- Landfill Closure Design
- Ash Disposal Area Remedial Design
- Closure Coordination with Plant Demolition Activities
- NPDES and Groundwater Monitoring and Reporting

Regulatory Agencies

Ohio EPA & Ohio DNR



Beckjord Site Plan



Pond Closure Approach

- POND A – CLEAN CLOSURE
- POND C
 - SLOPE STABILITY ASSESSMENT AND MODIFICATIONS AS REQUIRED
 - CONSOLIDATION AND CAPPING
- PONDS B AND Cx – CONSOLIDATION AND CAPPING
 - THREE PHASE APPROACH
 - FILL POND C AND Cx TO ELIMINATE POND FUNCTION (ODNR CRITERIA)
 - RAISE POND C AND Cx TO FUTURE PTI DESIGN GRADES AND CAP
- POND B SCHEDULE BASED ON LEACHATE MANAGEMENT APPROACH